

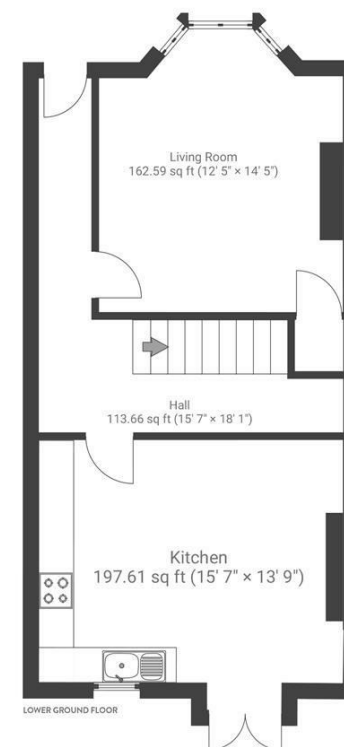
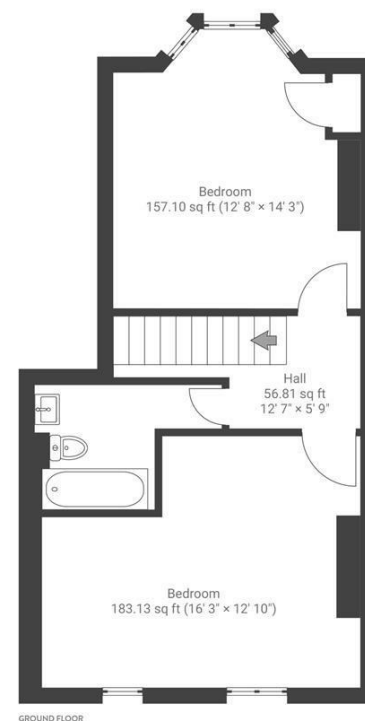
Boardwalk

Albany Road

, BRISTOL

Albany Road MONTPELIER

APPROXIMATE FLOOR AREA
85.9 SQM / 925 SQFT



Boardwalk

Albany Road

, BRISTOL

£

£350,000



BS6 5LQ

zzz

2 Bedrooms



1 Bathrooms

"This has been a fantastic starter home. There is a great local community and everything is within easy walkable distance; we'll miss heading over to Cheltenham Road for a coffee or a Sunday Roast at St Werburgh's City Farm"

